

PROFILE

Asset Class	Small Cap Equities
Style	Actively Managed
Region	Global Equities
Benchmark	MSCI ACWI Small Cap

PORTFOLIO CHARACTERISTICS

Med Market Cap (\$mil)	2,147.7	EPS Growth (%)	24.32
Number of Holdings	42	Div Yield (%)	2.05
Return on Equity (%)	22.78	FCF Yield (%)	7.67
Price/Earnings Ratio	14.52		

INVESTMENT PHILOSOPHY

We seek to own high quality companies with durable business models and long-term sustainable growth. We will invest in these companies when they trade at an attractive discount to intrinsic value. The durability of the company and the valuation discount at purchase provide our investors a margin of safety.

INVESTMENT PROCESS

The investment process is a multi-step, rigorous, primary due diligence methodology that involves a qualitative assessment of the company's business and the industry in which it operates, an in-depth review of financial metrics to support the qualitative assessment and a determination of the intrinsic value of the company.

INVESTMENT FOCUS



High Quality Companies



Durable Business Models



Long-Term Sustainable Growth

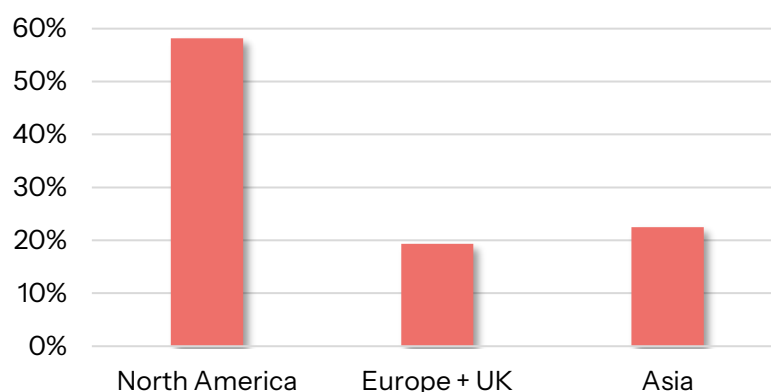


Discount to Intrinsic Value

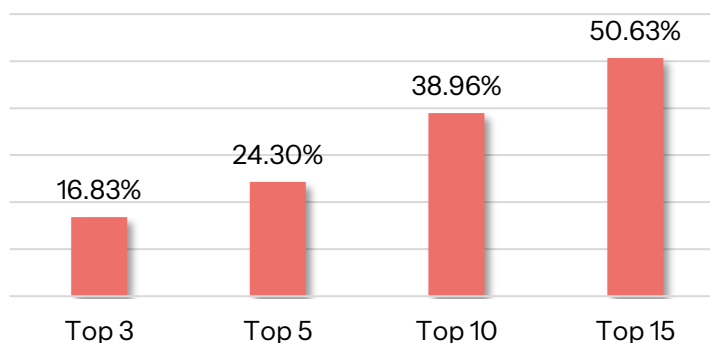
TOP FIVE HOLDINGS

National Vision Holdings	6.42%
Lindblad Expeditions	4.69%
Modine Manufacturing	4.68%
Brink's Co	4.14%
Savers Value Village	3.65%

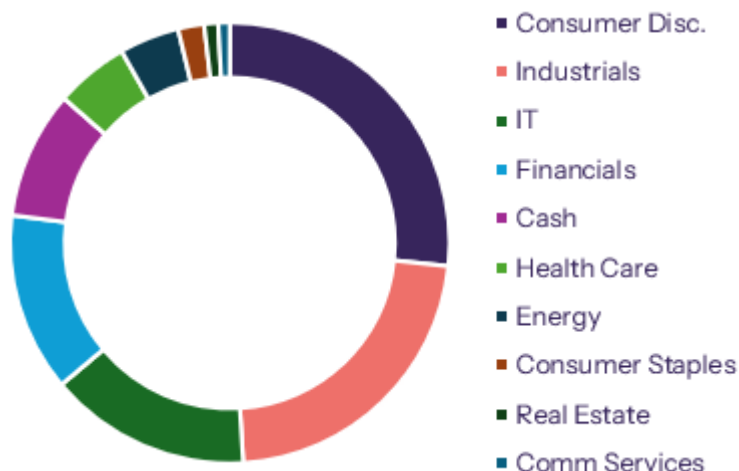
REGIONAL BREAKDOWN %



PORTFOLIO CONCENTRATION



SECTOR BREAKDOWN



DISCLAIMER

This document is for informational purposes only and does not constitute a solicitation or offer by GIS or any of its affiliates to buy or sell any securities, financial instruments, or strategies. Investors are advised to consider the investment objectives, risks, charges, and expenses of any investment carefully before investing. The information and data contained herein have been obtained from sources believed to be reliable but are not guaranteed as to accuracy or completeness. The opinions and estimates constitute our judgment and are subject to change without notice.

The GIS Global Smaller Companies (“GSC”) strategy is now managed with live assets as of April 3, 2025, via an Actively Managed Certificate (AMC) on the UBS platform.

The information provided herein should not be construed as a recommendation to purchase or sell any particular security or investment strategy.

An investment in the GSC is speculative and involves a high degree of risk. There is no guarantee that the investment objective of the GSC will be achieved. Moreover, any referenced past performance should not be construed as an indicator of future performance.

The inclusion of the index comparisons and/or references is for informational purposes only and should not be used as the basis for making an investment decision. There are significant differences between the GSC and the index herein including, but not limited to, risk profile, liquidity, volatility, and asset composition. A potential client must carefully evaluate all potential risk factors and should not make an investment unless it is able to bear the economic risks associated with such investment and is prepared to lose all or a substantial portion of its investment.